

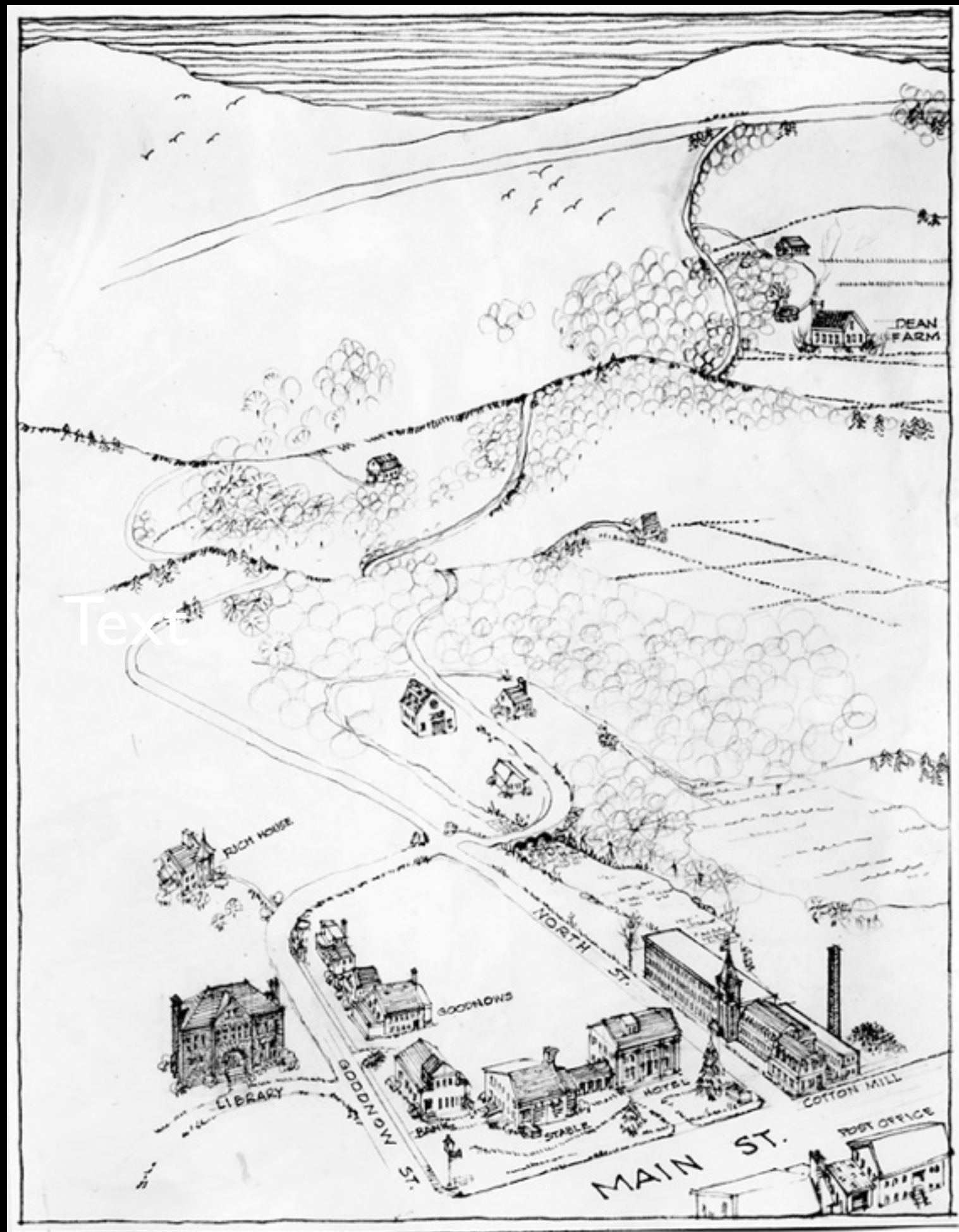
# The Dean Murder

Jaffrey Historical Society

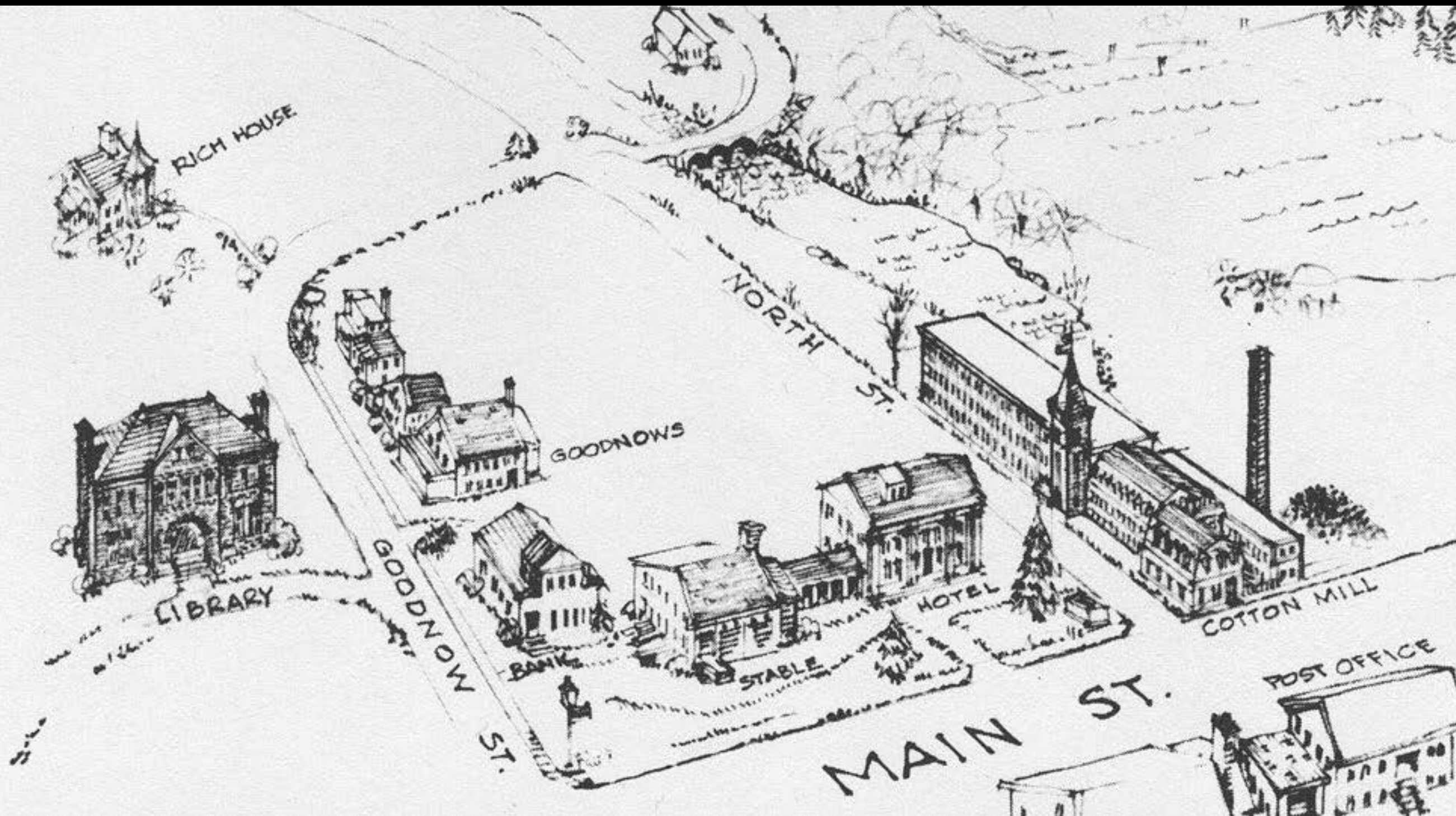
August 13, 1918

# The Setting

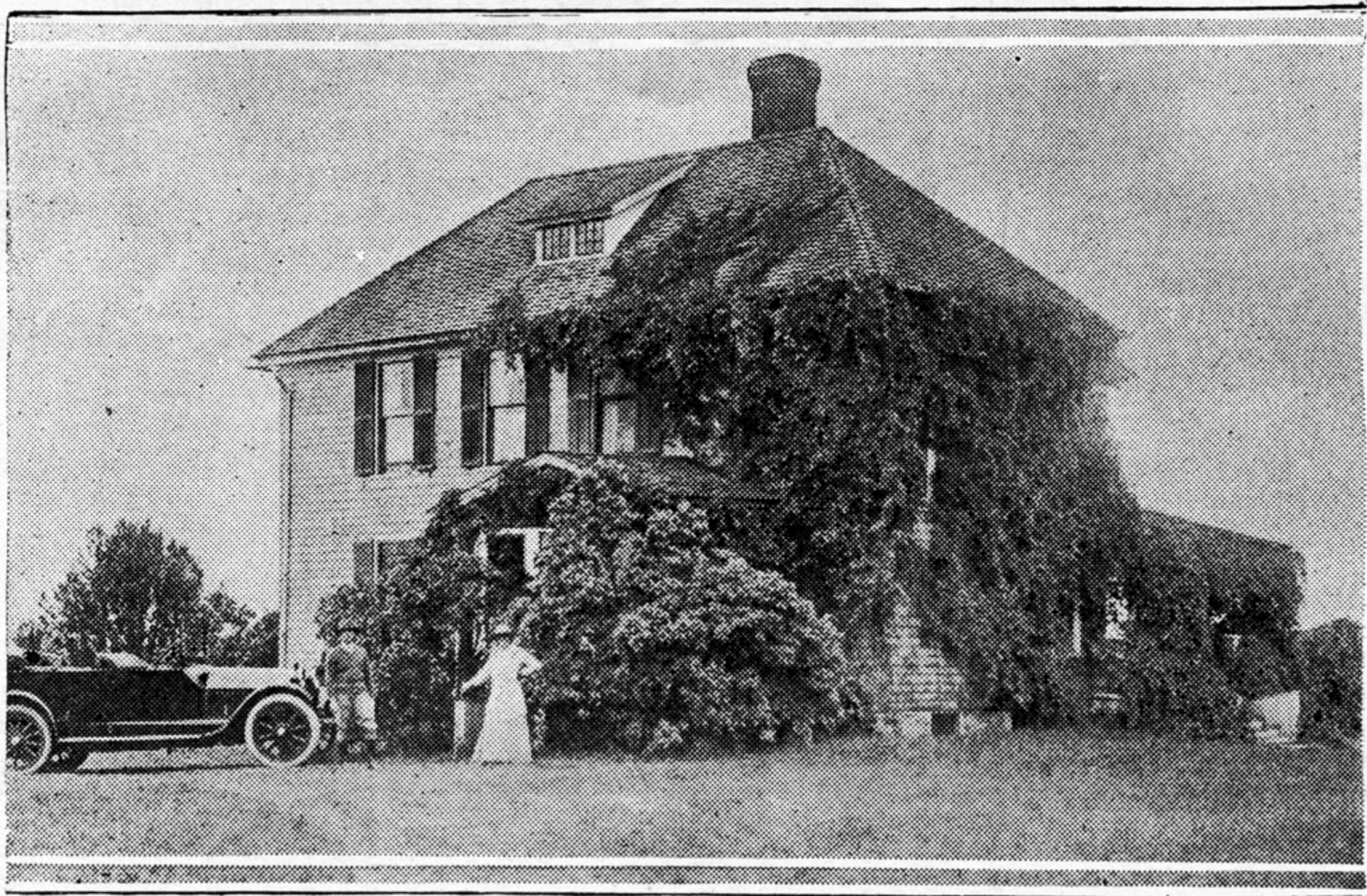
Bird's-eye view of East Jaffrey at the time of the murder.



# Detail of Bird's-eye view of East Jaffrey.







The Dean House (Built in 1893)





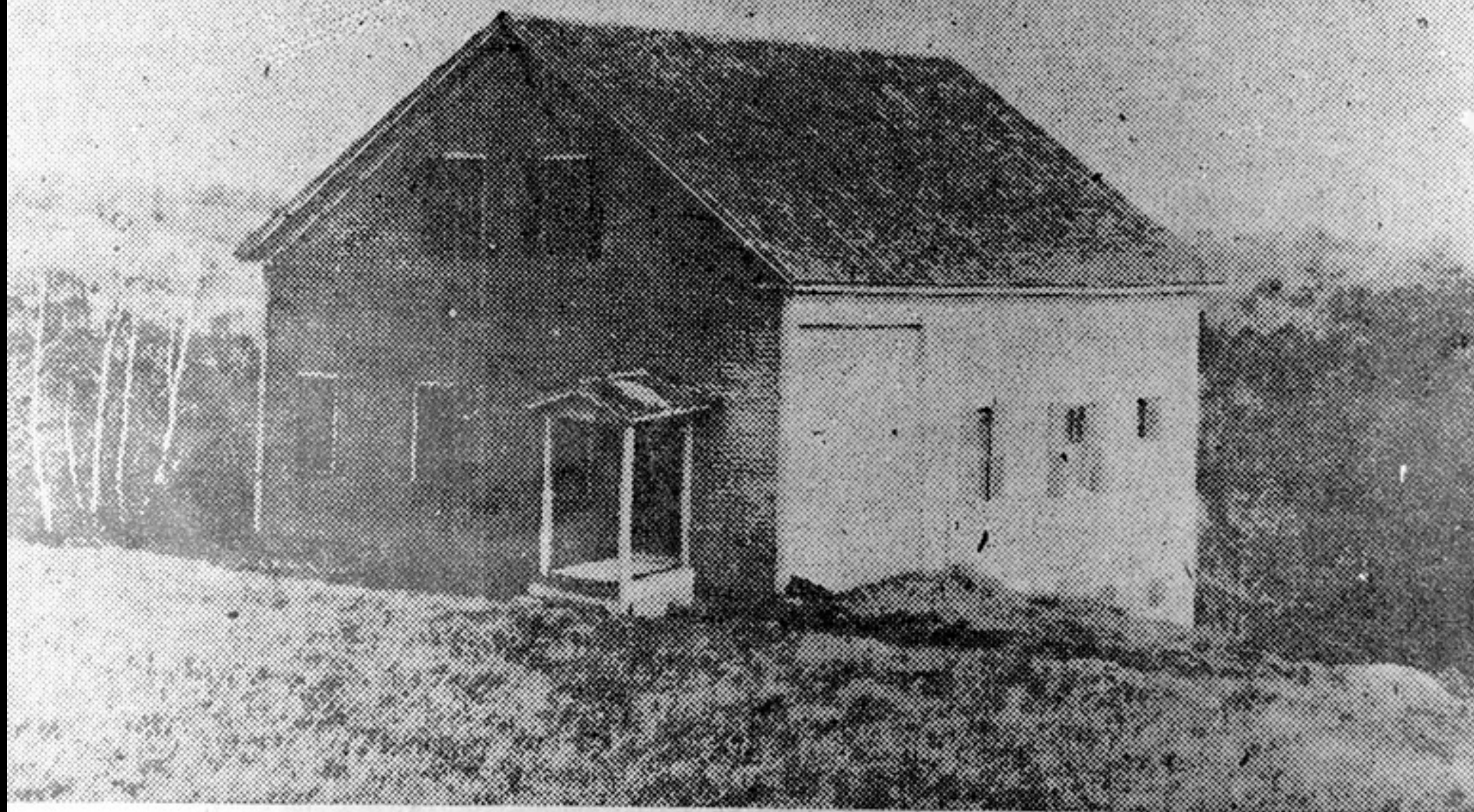
The Dean house.





The Dean house today.





### Site of the Dean Murder

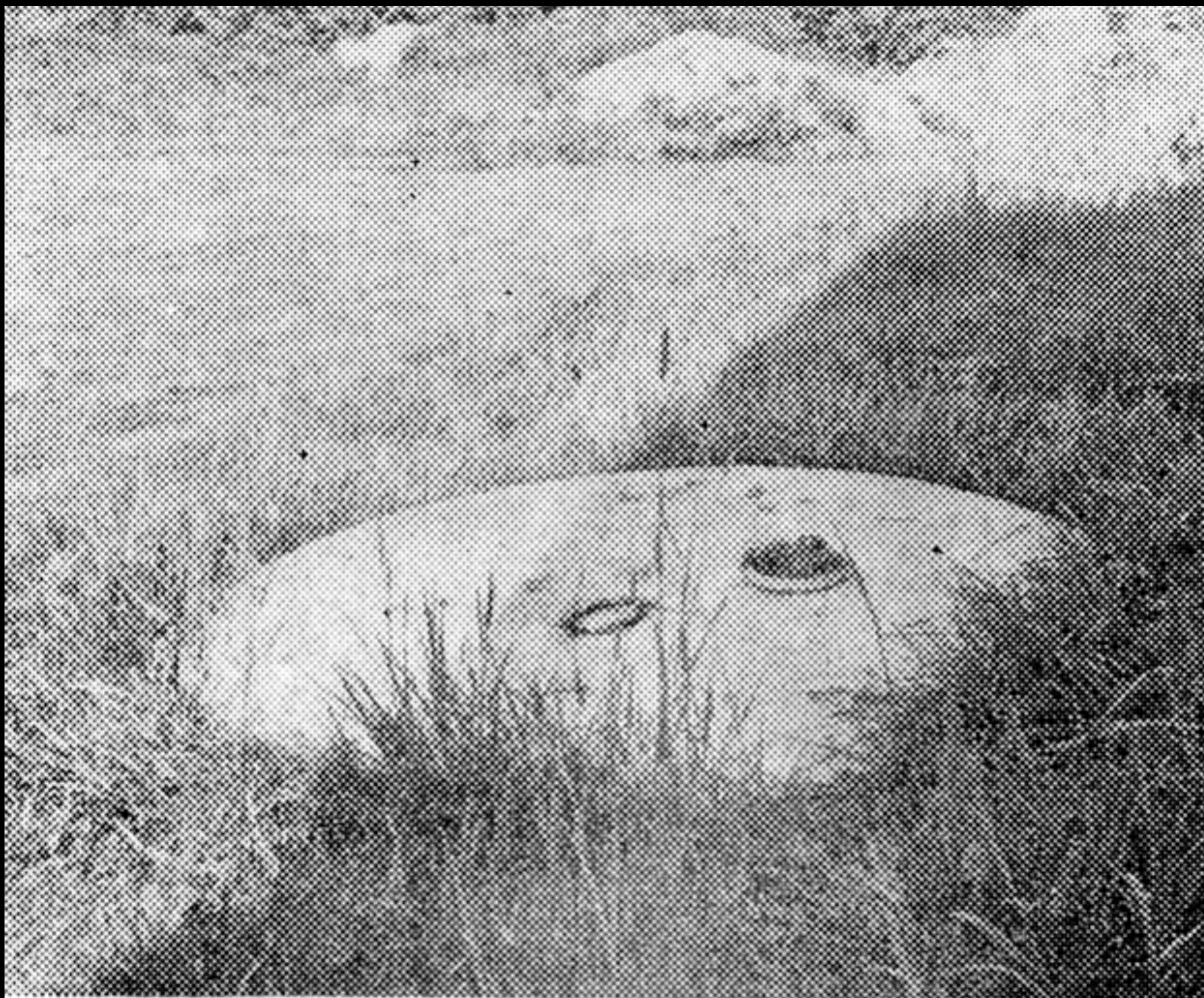
Pictured above as it looked in 1918 is the barn where Dr. William Kendrick Dean was murdered 50 years ago today<sup>50</sup>.<sup>68</sup> No clues were ever found in the barn, however.





Location of the barn today.





### Where Dean's Body Was Found

About 12 hours after Dean was murdered, his body was pulled with a pair of ice tongs from six feet of water in a cistern near the house.





The cistern today.





The Bungalow as remodeled in 1910.



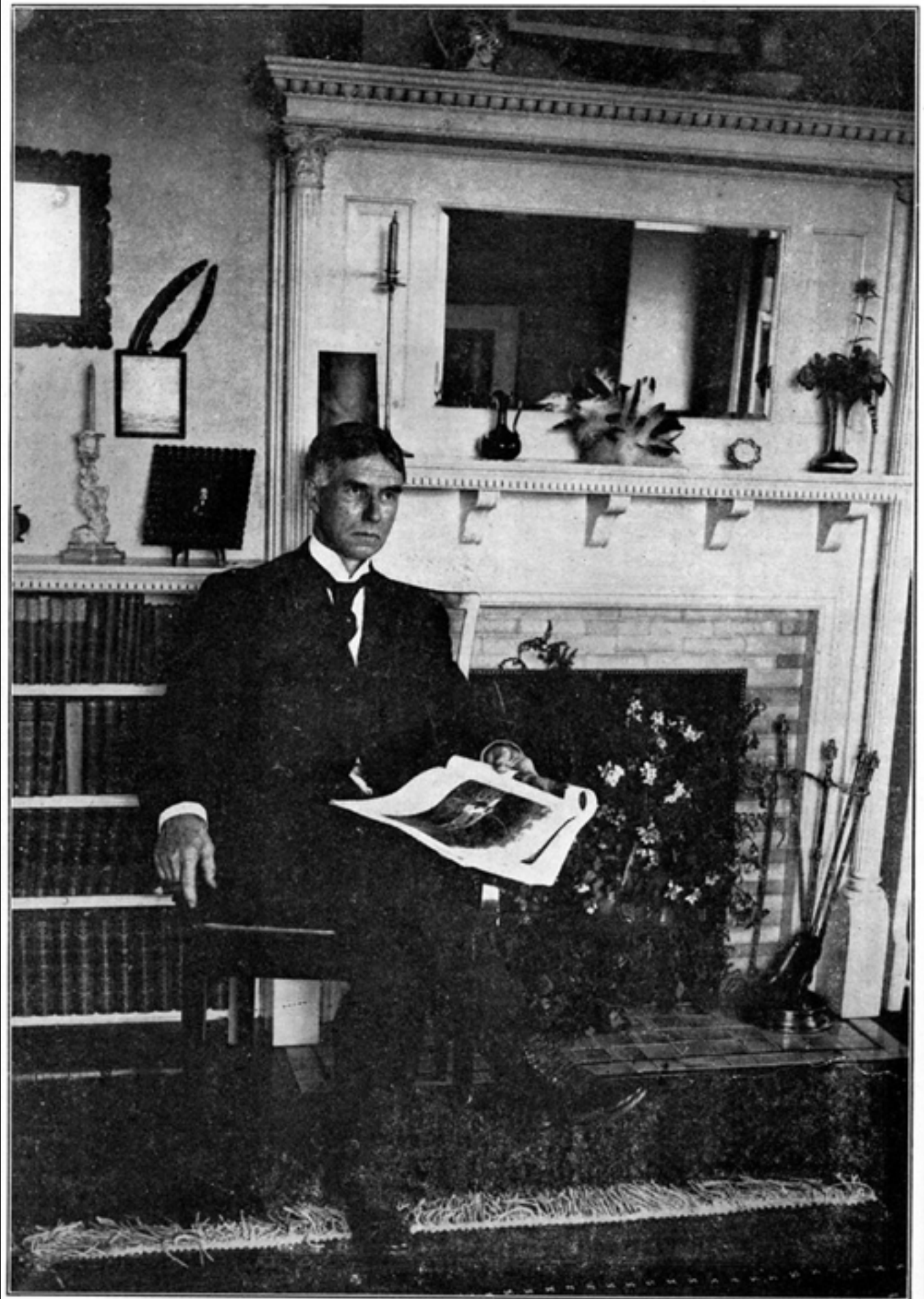


The Bungalow today.



# The Cast of Characters

Dr. Dean



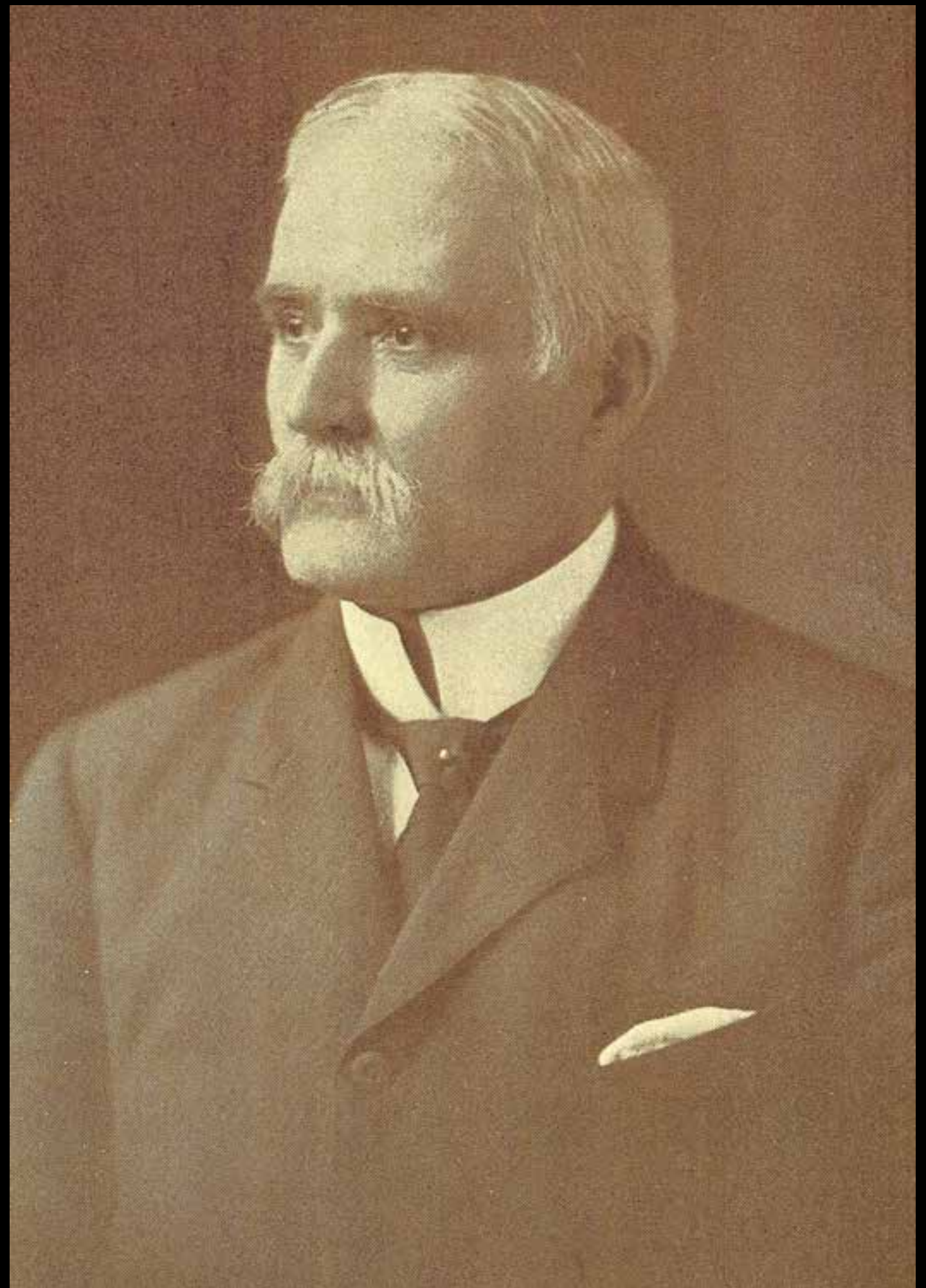
W. K. Dean at 53 (about 1908)



Charles Rich



Lawrence Colfelt, Sr.





Harry N. Guterman



# The Monadnock Bank





The Monadnock Bank





The Monadnock Bank



The Rich house, Bradley Court





The Rich house, Bradley Court, 1996.





The Rich house, Bradley Court, today.





The Rich house, Bradley Court, 1996.





The Rich house, Bradley Court, 1996.





The Rich house, Bradley Court, 1996. Barn.



# Some of the Books & Articles



# The Dean Murder Mystery

By Bert Ford

War Correspondent and author of "The Fighting Yankees Overseas."

With an Introduction by William Dean Goddard.

Privately Printed for the Relatives  
Pawtucket, R. I.  
1920

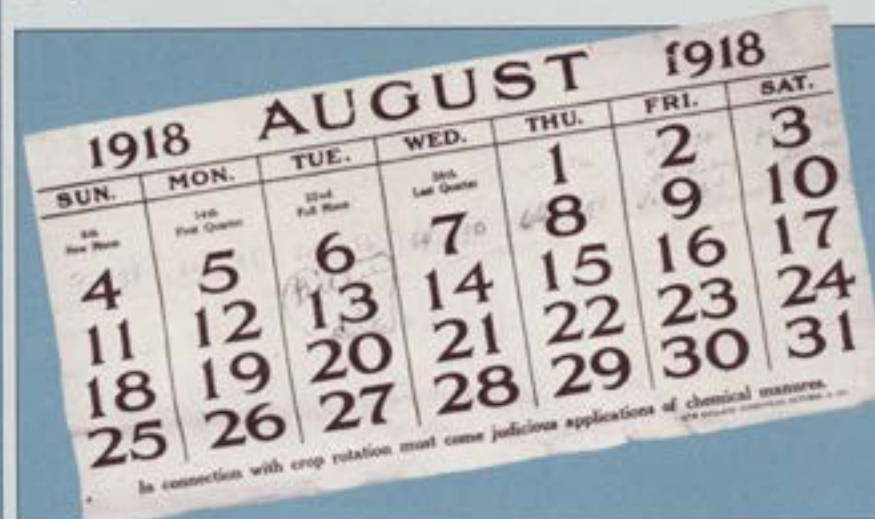
418

Bert Ford



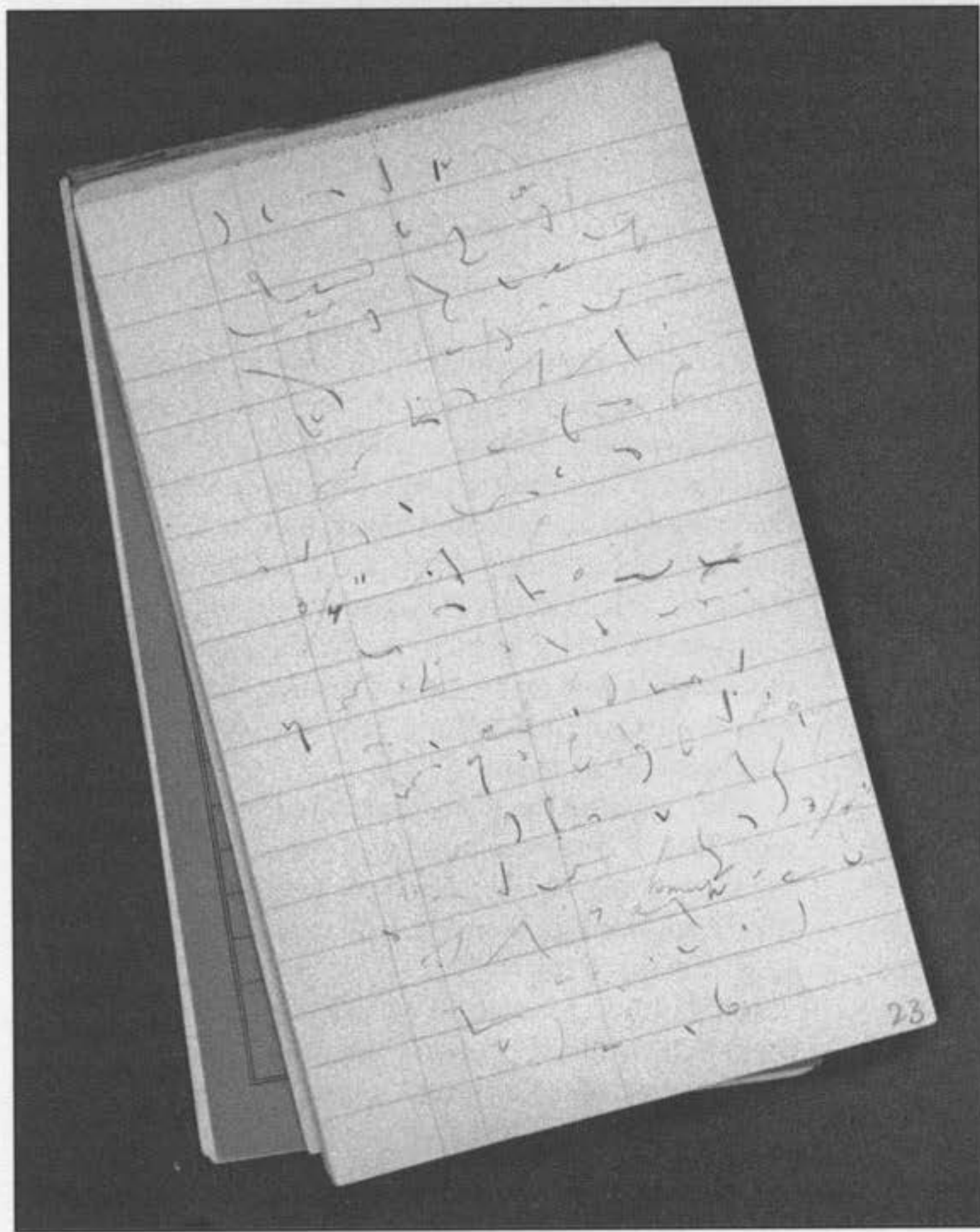
H E A R I N G *by*  
*the* G R A N D J U R Y  
*on the* D E A T H *of*  
W I L L I A M K. D E A N

A P R I L 11-22, 1919  
C O U R T H O U S E, K E E N E  
N E W H A M P S H I R E



*Transcribed, edited and published by*  
M A R G A R E T C. B E A N





LEFT: The Pitman shorthand notes became very familiar after working with them for six years. Lena Marsh, the Court Reporter, had high marks from my expert Pitman friend, Samuel Fitz-Henley, of Kingston, Jamaica. This page reads:

... was that Mr. Dean died from strangulation, that is, he wasn't drowned. In other words, he didn't breathe after he went into the water. Wound around his neck twice was a hard hitch rope, or halter, one of those kind such as you gentlemen are all familiar with, a hard  $\frac{3}{4}$  inch rope.

Now Mr. Pickard is going to draw a little chart of the particular points, not, of course, according to scale, but so as to give you gentlemen a little idea of the situation up there at the Dean homestead.

I was telling you about the rope which was around Mr. Dean's neck. It was a hard  $\frac{3}{4}$ -inch hitch rope with a snap on one end, and back a couple of feet or so, and I would say you could put this. . . .

# PROMINENT CITIZEN: *Prime Suspect*

A Personal Account of  
the Dean Murder Mystery,  
A Tragedy in Which  
The Author Was Involved



JAFFREY BANKER CHARLES RICH

By Georgiana Hodgkins

PUBLISHED BY THE JAFFREY HISTORICAL SOCIETY



# LIGHTS FROM MONADNOCK

-2-

REPORT MADE BY: Harry E. Marshall PLACE WHERE MADE: Boston, Mass. DATE WHEN MADE: June 5, 1918 PERIOD FOR WHICH MADE: 5 Apr. 19-18

TITLE OF CASE AND MATTER OR SUBJECT OR NAME OF BATTLE OR NAVAL OPERATION: In re: Flashing lights in Souther New Hampshire.

STATEMENT OF OBSERVATIONS, EVIDENCE COLLECTED, NAMES AND ADDRESSES OF PERSONS INTERVIEWED, ETC.: At Peterboro, N. H.

182613

In accordance with suggestion and pursuant to the directions of Agent Gifford of the Boston office, Agent together with Agent Nash, left North Station, Boston, Mass. at 3 P. M., arriving at Peterboro, N. H. at 6.38 P. M. and registered at the Tavern.

Nash reported to the Boston Office that in the observation of flashings lights, a single observer who has seen a flashing light at a distance of several miles, and on the next night has taken his station at the point where he believed the light was, and yet sees no flashing light, has no way of knowing whether absence of this light is due to the fact that it is not being operated or that it is behind some obstacle from his observation point.

After supper, Agent occupied suitable observation point observing toward the W. and at 9:30 P. M. saw a beam of light of 2 seconds duration, originating from a point about N 60 W (magnetic) the beam pointing into the sky in a one o'clock direction. At 9:32 P. M. a steady white light appeared for 3 minutes from a general north-westerly direction. At 10:15 P. M. in a south westerly direction, and near Moore's Farm, I saw a lantern moving as if it were carried by a man and lasting 2 minutes. This lantern was also observed by Agent Nash from his observation point about a mile south of mine. I completed my observation at 11:15 and returned to the hotel.

This investigation will be continued.

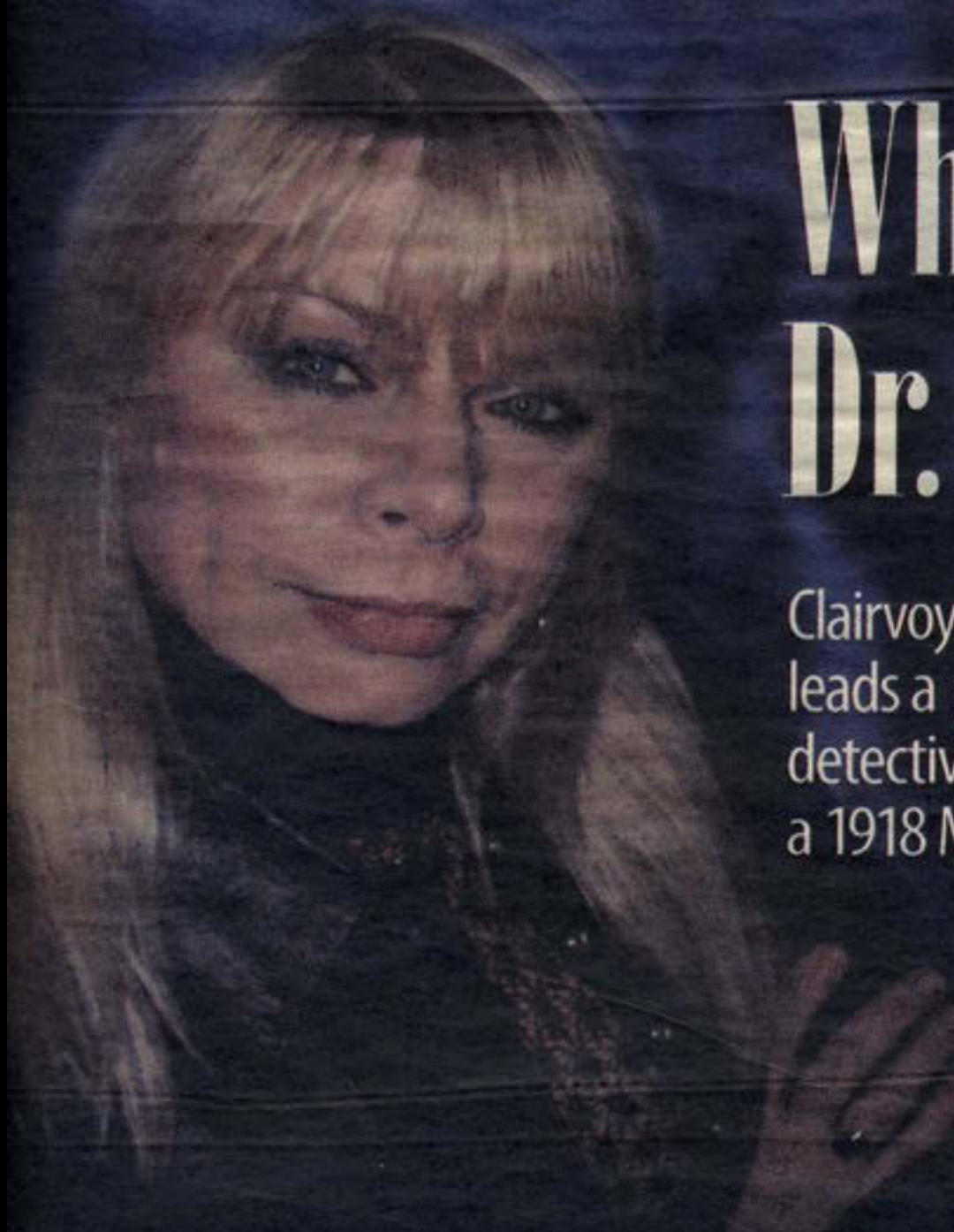
**JACK COEY**



ON LEADER

Thursday, Aug. 12, 2010

# Weekend



## Who killed Dr. Dean?

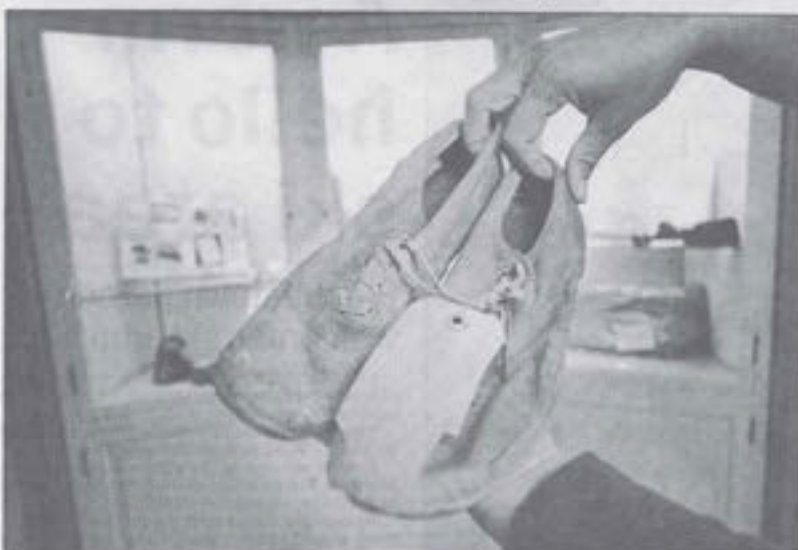
Clairvoyant CC Carole  
leads a paranormal  
detective program about  
a 1918 Monadnock murder

—Page 2

**Wilde things:** 'Dorian Gray' and 'Ernest' on NH stages | Page 4







By J. Goss/Monadnock Ledger Staff

These shoes, worn by William Kendrick Dean as he plunged lifeless to the bottom of a well in Jaffrey, are part of an exhibit at the Jaffrey Civic Center. More than 76 years later, the case still fascinates.

## A long-lasting mystery

Civic Center exhibit tries to shed light on Dean murder

Aug. 13, 1918, was a typical late summer night. It was hot, moonlit, the air motionless, the crickets silent. It was the perfect night for a murder. Dr. William Kendrick Dean's, to be exact. He was a prominent, well-respected Jaffrey citizen.

Fifteen minutes after drinking a glass of milk and eating a couple of currant buns, Dean was bludgeoned with a three-pronged hand weeder in his barn, a mere 500 feet away from his house where his wife was getting ready for bed. A light horse blanket was wrapped around his head; his ankles, knees, and wrists were tied; and his body was dropped into a 12-foot well. A 27-pound rock, placed inside the grain sack pulled over his head and shoulders, made sure he stayed submerged in the dank, dark water.

Seventy-six years later, his death is still a mystery. Nearly all the Jaffrey residents — and the various suspects — have since passed away. But like most unsolved crimes, especially those that occur in a place as peaceful and safe as Jaffrey, this one refuses to die.

Case in proof is the latest exhibit at the Jaffrey Civic Center. On display through Sept. 23, you can see the actual evidence presented during the Dean murder trial, held at the Keene Court House eight months after the murder.

Included are a piece of wood from the barn, splattered with blood; Dean's tattered rubber foam canvas shoes, black socks, and garters, which he was wearing when he was killed; and the white porcelain doorknobs that had been smudged with a bloody hand but didn't reveal fingerprints.

The weapons are also included: the horse blanket pulled over Dean's head to absorb the blood, the ropes he was tied up with, and the burlap bag tied over the blanket which held the rock used to weigh him down in the cistern.

The evidence was given to the Jaffrey Historical Society by the Keene Courthouse early this summer, thanks to the effort of Margaret Bean, a Jaffrey resident who you might say is the local expert on the Dean murder.

Bean's father-in-law, D.D. Bean, and Dr. Frederick Sweeney were both interested parties during the Dean murder trial. Sometime later, Sweeney's son, Bud, received a letter from Stillman Rogers, clerk of the Superior Court in Keene.

Rogers said that in rebuilding and expanding the courthouse, they had come across a brown paper package containing 20 notebooks in Pittman shorthand, the recording of the Dean murder grand jury inquest. They asked if he was interested in them.

Knowing of her interest in the case, Sweeney informed Bean. By coincidence, Bean had learned

### A LOOK BACK



Kelly Stimmell

Pittman shorthand, an obscure form long since overshadowed by the more popular Gregg, while working on Wall Street. With Sweeney's permission, she went to the courthouse and was given official permission to transcribe the notebooks two at a time.

Bean spent six years transcribing, an arduous task because there were many passages she was unable to translate.

During that time, Bean was vacationing in Jamaica when she read about Samuel Fitz-Henley, a Pittman expert who had just been paid thousands of dollars to transcribe the notes of a reporter who had died. Bean met with him, and he told her that Pittman shorthand had changed over time, then showed her a teaching manual and shorthand dictionary from the early 1900s, pointing out the differences.

Armed with this new knowledge, Bean returned home to finish the transcription, which she eventually published in a book, *Hearing by the Grand Jury on the Death of W. K. Dean, April 11-22, 1919, Courthouse, Keene*.

Meanwhile, Bean had developed a friendly relationship with Rogers, clerk of the court. He told her about the box of evidence. Twice Bean arranged to borrow the evidence so that history teacher Dennis Wright could present it to his middle-school students.

That got Bean thinking about having the items kept at the Jaffrey Historical Society. Last year, Bean asked Martha Crocker, a friend and Peterborough judge, to write a letter to the Keene court. Early this summer, they turned it over to the historical society.

Poring over these artifacts could lead one to create some new conclusions to this who-did-it, although it's highly unlikely.

Immediately after the murder, there were just prime suspects and motives: Mrs. Dean, who could have murdered her husband in a fit of jealousy; Lawrence Colfelt of New York, a mysterious stranger who wintered in Dean's large house, rumored to be a German spy.

This theory was strengthened by the fact that shortly before Dean's murder, Dean had asked him to move out. Intoxicated hoodlums caught in Dean's barn; Charles Rich, town moderator, chair director, cashier of the Monadnock Bank, and district judge.

The prime suspect, Rich had a mysterious black eye the day after the murder.

He claimed his horse had kicked him; others believed he was lying. The town, already caught up in World War I hysteria, was torn between those who sided with Rich and those who called him a cold-hearted killer.

Nothing was ever proven, and Rich ended up winning a libel suit against the *Boston American* newspaper. But that didn't change what people thought. Today, the mystery goes on.

Bean said, "I still have people tell me in confidence that they know who did it, but they all say someone different."



# The Evidence






Chuck Cole photographing the evidence.





1916 AUGUST						
SUN	MON	TUE	WED	THU	FRI	SAT
				1	2	3
4	5	6	7	8	9	10
11	12	13	14	15	16	17
18	19	20	21	22	23	24
25	26	27	28	29	30	31





ROPES  
DR DEAN WAS  
TIED WITH!





DR. DEAN'S SNEAKERS  
THE ONES HE WAS  
WEARING WHEN HE  
WAS KILLED

EVIDENCE #5



WOOD FROM THE BARN  
WITH BLOOD SPATTERS



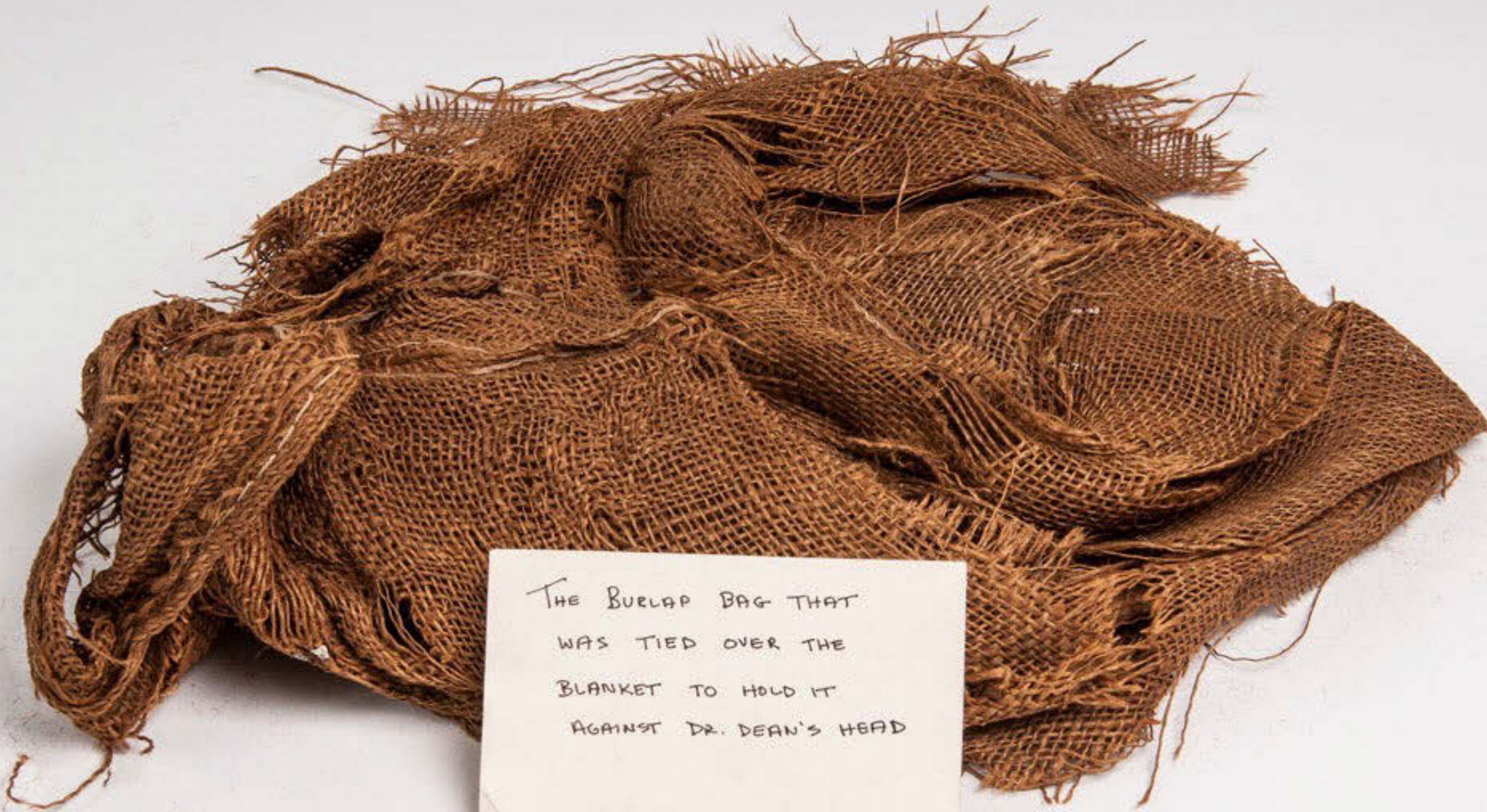
THE DOOR KNOBS THAT  
WERE TESTED FOR  
FINGERPRINTS





BLANKET  
DR DEAN WAS  
WRAPPED IN!





THE BURLAP BAG THAT  
WAS TIED OVER THE  
BLANKET TO HOLD IT  
AGAINST DR. DEAN'S HEAD





THE SOCKS AND GARTERS  
HE WAS WEARING  
WHEN HE WAS KILLED





**DR DEAN'S  
SNEAKERS**

CALENDAR  
NOTE WRITING ON  
AUGUST 13!

AUGUST 1918						
SUN.	MON.	TUE.	WED.	THU.	FRI.	SAT.
6th New Moon	14th First Quarter	22nd Full Moon	28th Last Quarter			
4 <sup>78</sup>	5 <sup>87</sup>	6 <sup>86</sup> <i>Billed</i>	7 <sup>90</sup>	1 <sup>76</sup> 8 <sup>98</sup>	2 <sup>76</sup> 9 <sup>64</sup> <i>RAIN ALL DAY</i>	3 <sup>72</sup> 10 <sup>71</sup> <i>RAIN (PM)</i>
11	12	13	14	15	16	17
18	19	20	21	22	23	24
25	26	27	28	29	30	31

In connection with crop rotation must come judicious applications of chemical manures.

EW ENGLAND HOMESTEAD, OCTOBER 16, 1915.



day.  
uncomfortable.  
left over  
home to-night  
a drive  
afternoon

on the mountain with Chas. & Hattie  
Bacon.

12 Fair and warmer.

13 Fair and very warm.

14 Fair and very warm with a very  
heavy thunder shower about  
4.30 P.M. Mr. Dean was found, murdered.

15 Fair & cooler  
Heifer calf was born to the Black Cow

16 Fair

17 Mary Lacy came up to stay a few days.  
Fair & cool.

18 Fair & cool.

14 Fair and very warm with a very  
heavy thunder shower about  
4.30 P.M. Mr. Dean was found, murdered.

Entry in Ralph Boynton's diary for the 14th of August.



# Some Odds & Ends





Box of Dean Murder documents in the Library Vault.

Typical  
deposition  
page in the  
Dean Murder  
file in the  
Library Vault.

Ints.

71. So it is on beyond your house, how far? A. I don't know just how far. Never measured it.
72. Well, approximately? Can you see anything that looks about as far as from there? A. I should think it was as far as from here to that sign there.
73. Which one? the one that says "standing on the seats forbidden"? A. Well the "exit". Well, it doesn't make any difference; that is all right.
74. How long has that light been there? A. I couldn't tell you how long it has been there.
75. Well, approximately? A. About three years, I should think.
76. About three years now? A. Yes, sir.
77. That night,--was that a moonlight night? A. Yes, sir; it was.
78. Was the moon shining then at that time? A. Yes, sir.
79. Shining brightly between 1 and 2 o'clock in the morning? A. Yes, sir.
80. On this day of August, 1918? A. Yes, sir.
81. You are quite certain that was the week of August 13, 1918? A. Yes, sir; I am positive.
82. How do you fix that? A. Why, I know that it was because I was worked up over the murder, and I was alone there staying nights with the children, and I couldn't sleep, and I hadn't gone to sleep when this car stopped in front of the house. Then a short time afterwards, I heard two o'clock strikes, so I knew it was that time.
83. That is, 2 o'clock on the village clock? A. Yes, Sir, by



# Typical FBI report

Geri F. Weiss

In re: William K. Dean Murder Case  
Lights in New Hampshire Mountains  
(German Spy Suspect)

3/21/19

and that somebody came for it. I heard them tell about three or four different ones. It was always a mystery to me how this could be at the bottom of the well, if Mr. Dean was thrown down like they said he was. How could it have gone in to the cistern, unless he tied himself up afterwards. This was a little bit of a cigarette case. It have been the last of the cigarette paper. I don't think it was more than 1-1/2 inches wide. It was not round at the corners, but kind of squared cornered. Mr. Dean used to make his own cigarettes. I have seen him.

Agents next interviewed Father Hannon, who stated as follows:

I have preserved the following clipping for you, taken from the "Keene Sentinel" of March 19th, which will tell you all about the meeting we had in regard to the Dean Murder case here.

THE MYSTERY OF THE DEAN MURDER

Recalled by a Recent Meeting in Jaffrey and Alleged  
New Evidence.

Discussion of the Dean Murder so long a very mysterious crime, and one without reasonable purpose or motive, so far as can be learned, was renewed at East Jaffrey, recently, when a large meeting of citizens was held at which County Solicitor Pickard, William Kent or De Kerlor, employed as a detective at first and later classed as a consulting psychologist and detective were heard. Nothing new of importance appears to have been found, to lead to the identification of the murder.

Mr. Pickard appeared at the meeting by request, it is understood, and reviewed the case at more or less length as far as he could do in a way consistent with his duties as the county prosecutor in charge. He also answered numerous questions in a similar way. Of course the solicitor and the attorney general have many facts and more or less evidence in their possession that cannot be made public. It is also understood that U. S. government authorities have been through the case very carefully and know all about



Dr. Dean in his sleigh, ca. 1915.



Dr. Dean's  
sleigh at the  
Rindge  
Historical  
Society today.





Dr. Dean's  
sleigh at the  
Rindge  
Historical  
Society today.







Dr. Dean's sleigh at the Rindge Historical Society today.





NH 'Cold Case Unit' with members of the Society.





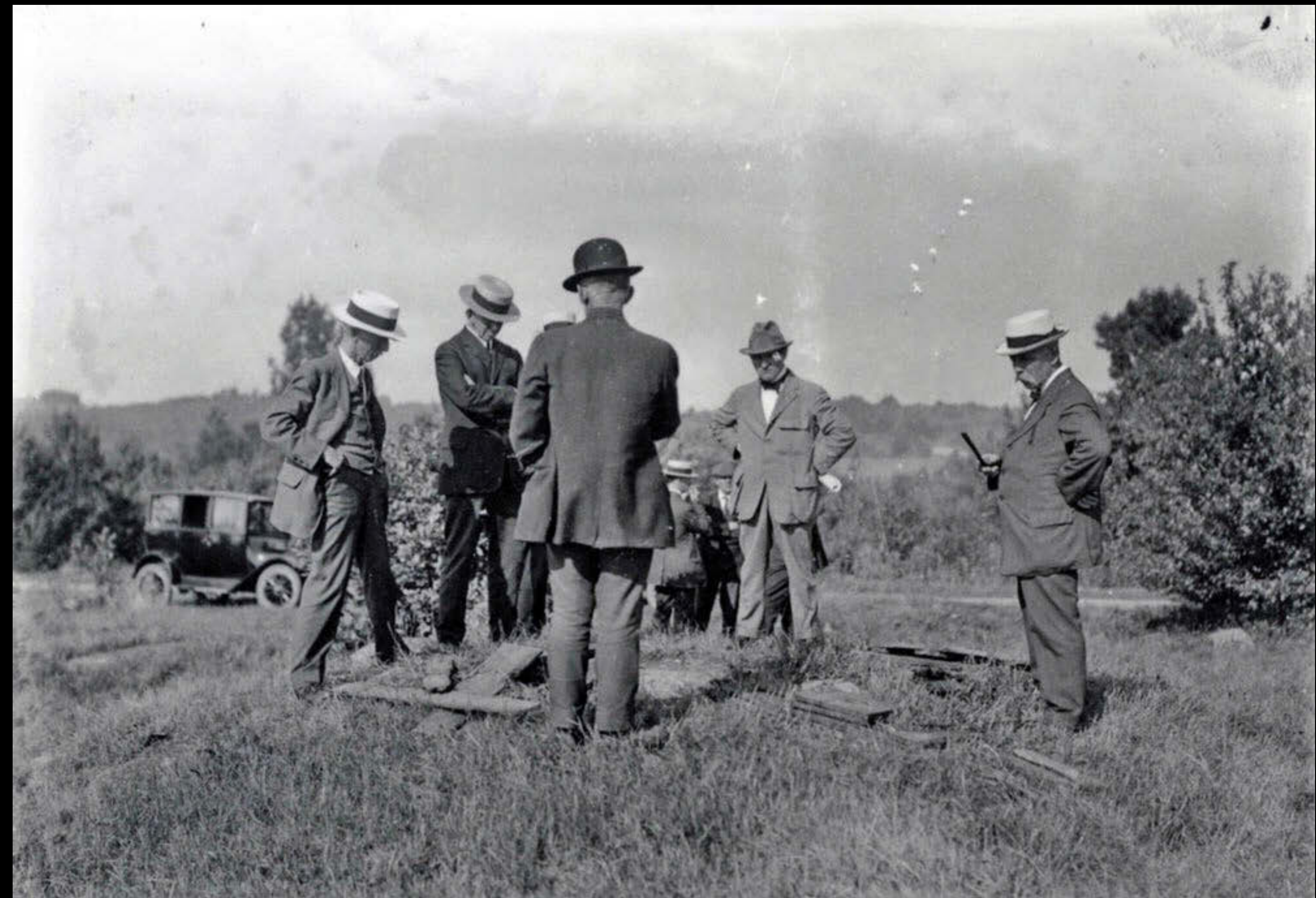
The Dean Murder Research Group meeting.

# The Disinterment of Dr. Dean (Don't be squeamish)



















Dr. Dean's  
gravesite, Mt.  
Hope Cemetery,  
Rochester, New  
York.







Charles Rich's gravesite, Conant Cemetery, Jaffrey.



August 13, 1918 - August 13, 2018

100 years

Any ideas on how we might  
'celebrate' the occasion?



The End