

'JAFFREY WORTHIES'

PORTAITS OF THOSE WHO
MADE A DIFFERENCE

JAFFREY HISTORICAL SOCIETY



APRIL 23, 2009

JOHN & ABIGAIL CUTTER

1765-1835

1768-1866



John Cutter.



Abigail Cutter.



John Cutler





Wednesday, August 27, 14



Wednesday, August 27, 14





Wednesday, August 27, 14



Wednesday, August 27, 14

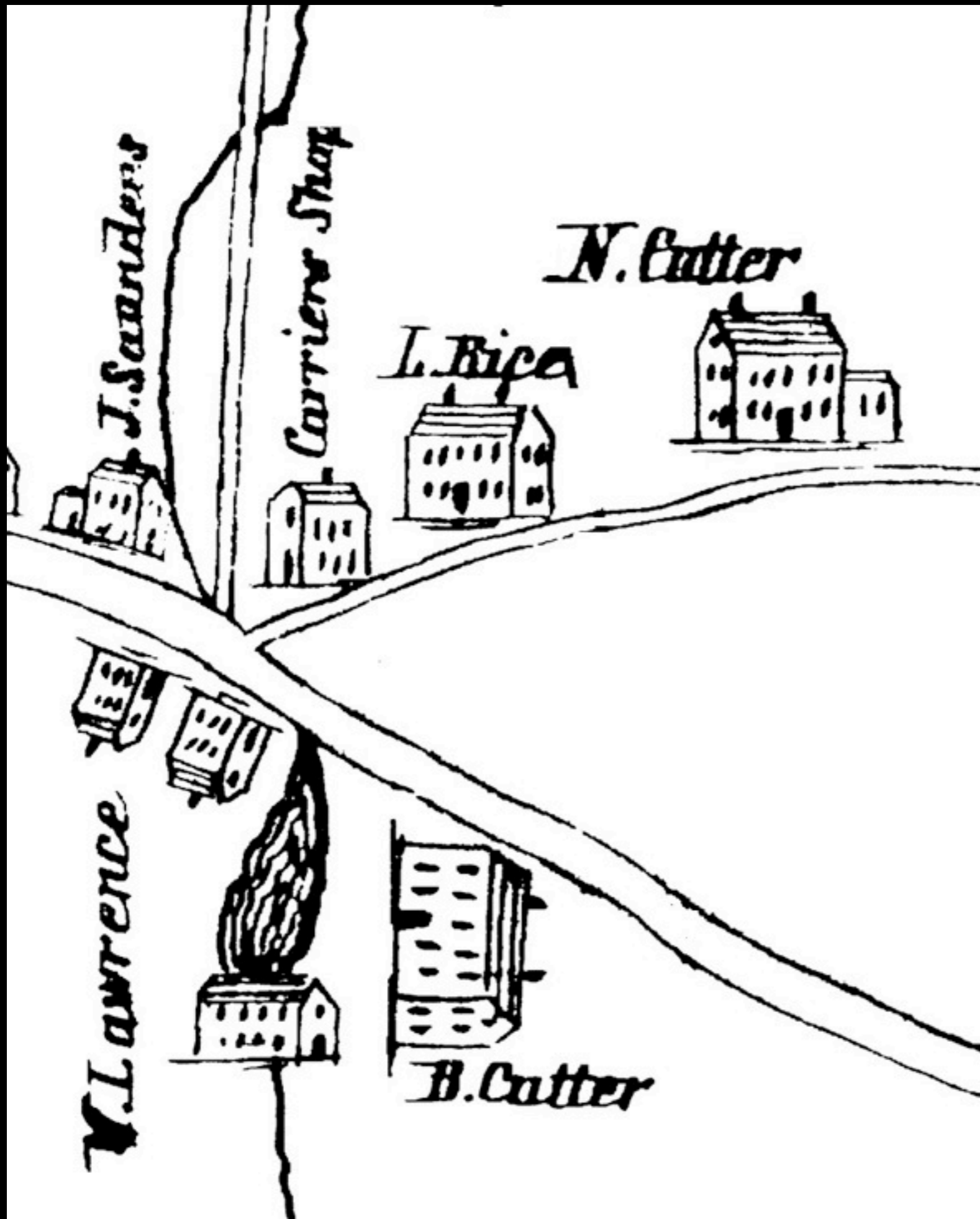


Wednesday, August 27, 14

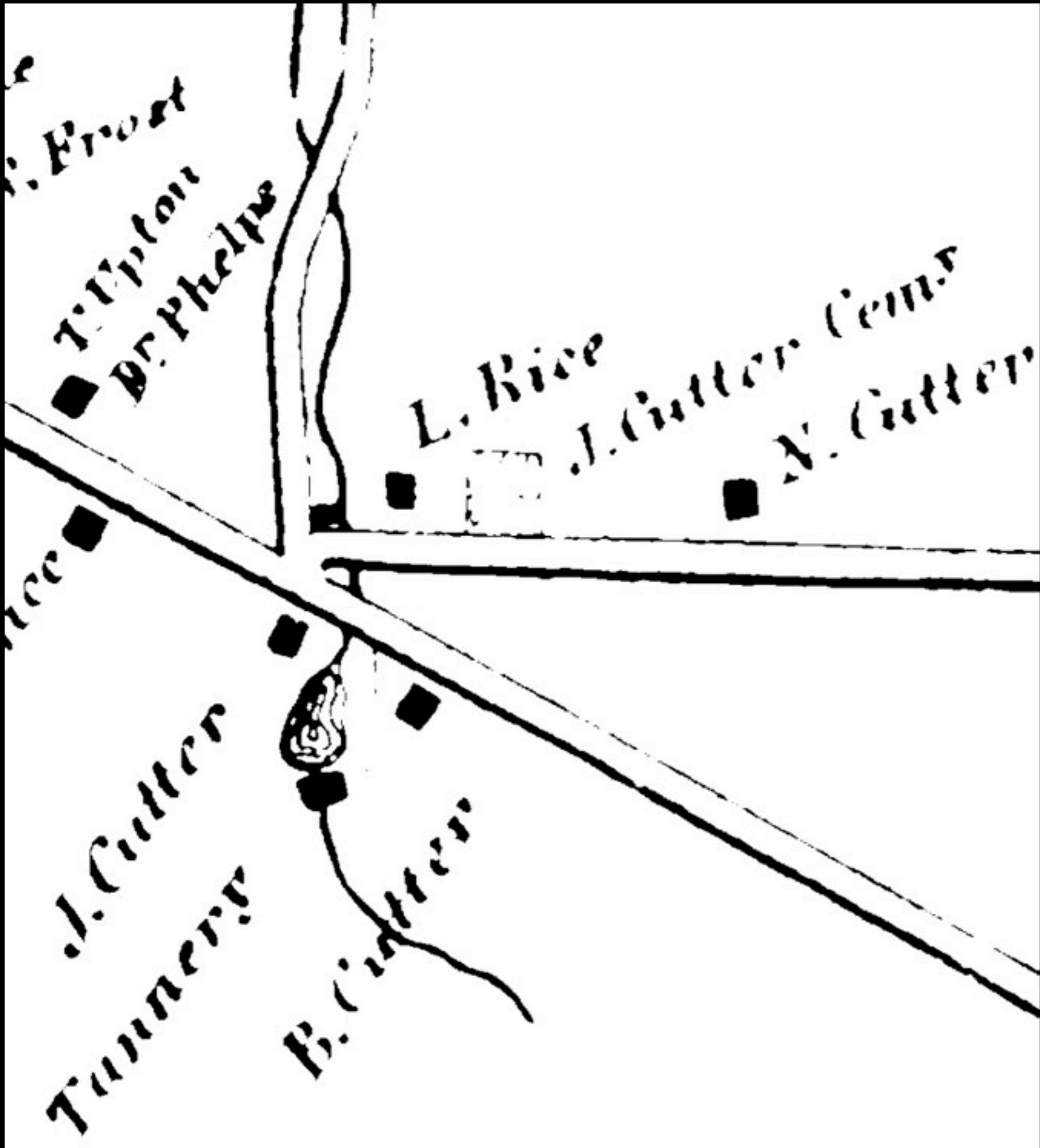


Wednesday, August 27, 14





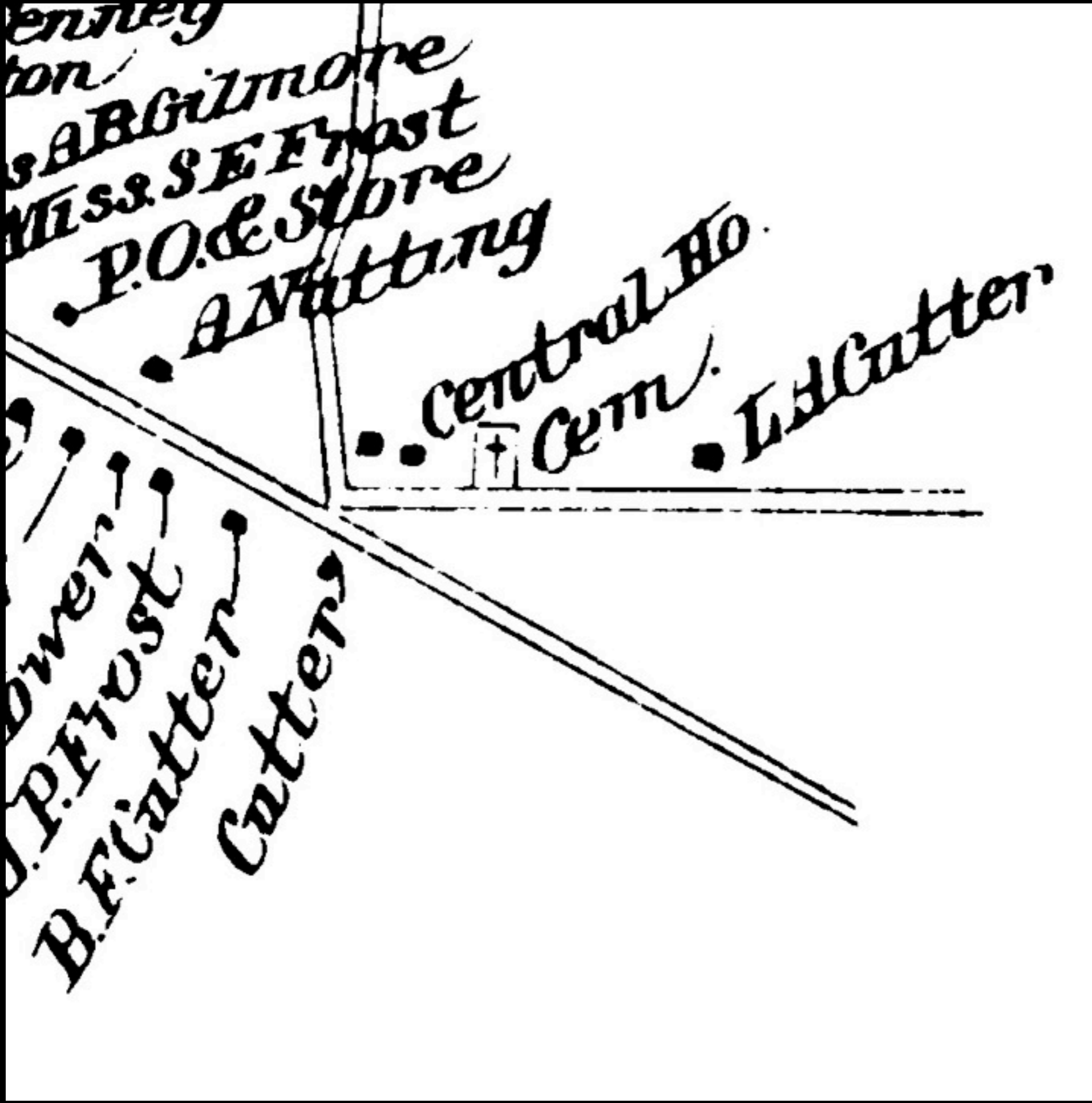
J.D. Gibbs' 1850
map of Jaffrey.
Detail.



L. Fagan's
1858 map of
Cheshire
County.
Detail.



Atlas of
Cheshire
County,
1877.
Detail.



D.H. Hurd's
Atlas of New
Hampshire,
1892.
Detail.















JOHN CUTTERS
Family Tomb.
Erected agreeable
to his request by his
executor AD. 1836.



COL. BENJAMIN &

1747-1826

RACHEL PRESCOTT

1754-1839



Col. Benjamin Prescott.



Rachel Prescott.



Col. Benjamin Prescott.



It is said that Benjamin Prescott came to Jaffrey in true pioneer fashion, on foot with a bag of beans over his shoulder and an axe in his hand.



B. Haywood



J.D. Gibbs' 1850 map of Jaffrey. Detail.

E. Prescott

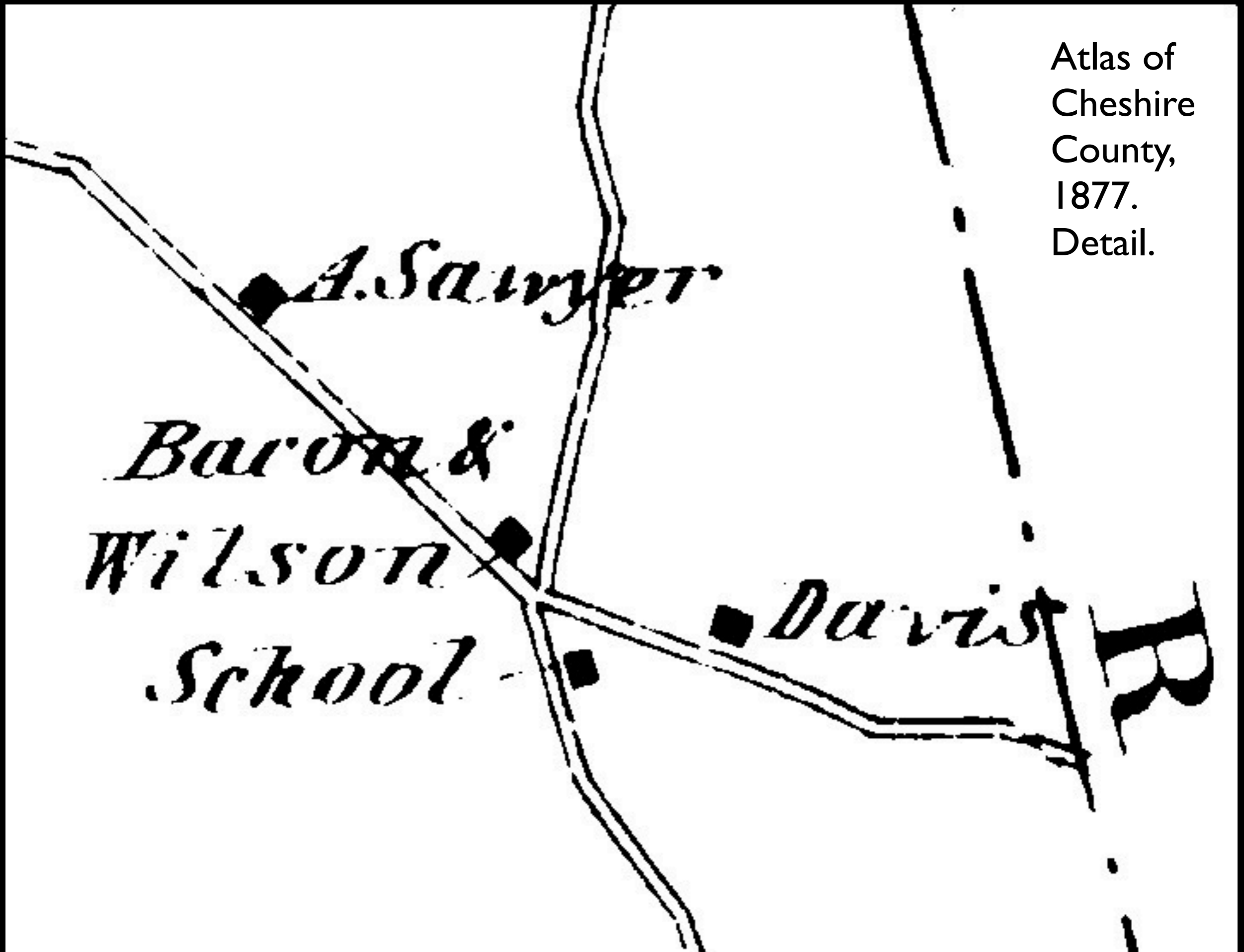


(1) Prescott



School No. 1

Atlas of
Cheshire
County,
1877.
Detail.



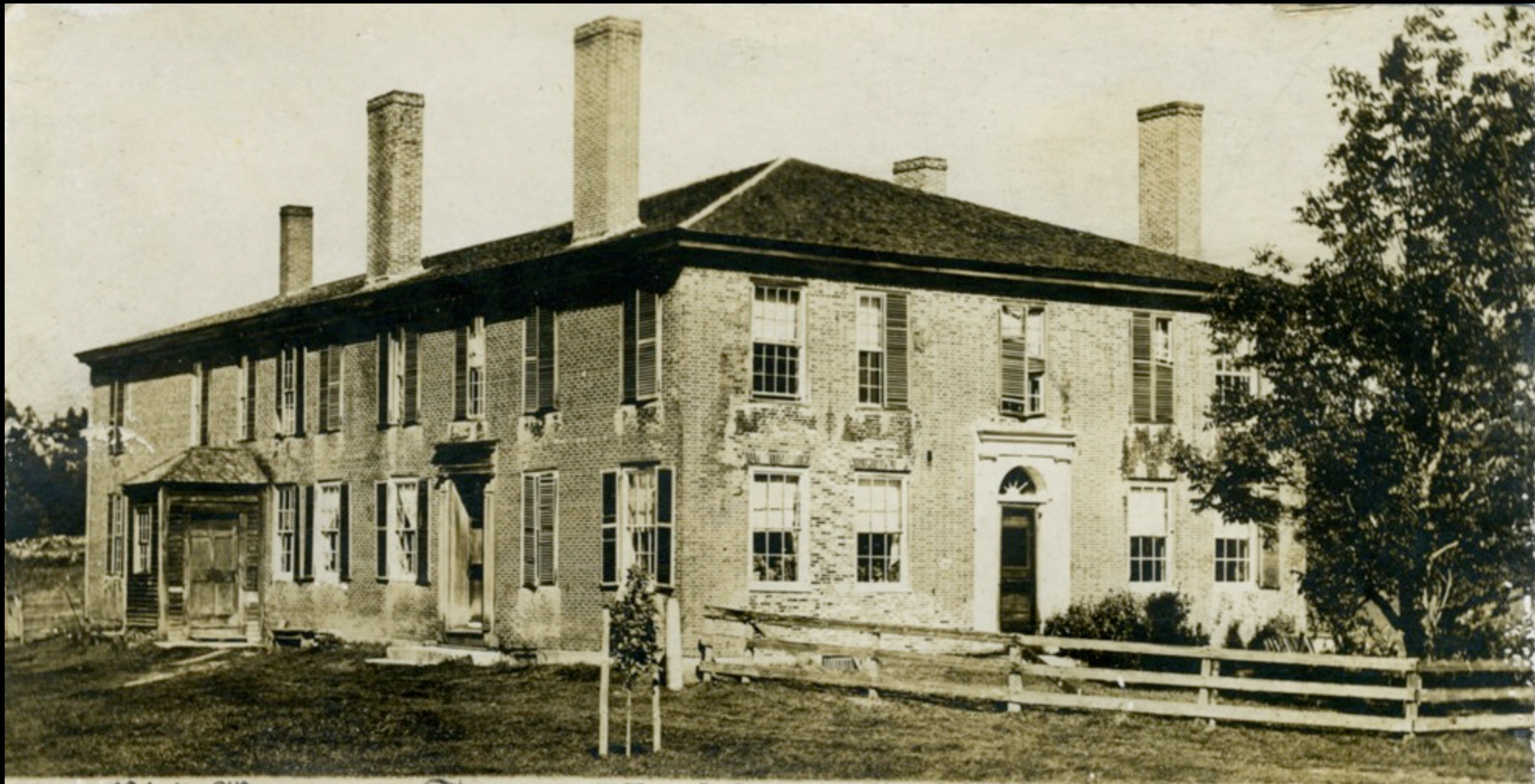












Old Prescott Tavern, East Jaffrey, A relic of Old Stage-coach Days, Built 1803
Photo by C. T. Johnson, Jaffrey, N. H.



Antique Wall Painting, of Boston Harbor, Painted in 1803, in old Prescott Tavern, East Jaffrey, N. H.
Copyright 1907 by C. T. Johnson Jaffrey, N. H.



Boston Marriott Long Wharf



Boston Marriott Long Wharf.

JONAS & BETSEY MELVILLE

1791-1869

1786-1863



Mr Jonas Melville.



Mrs Betsey Melville.



Jonas Minot Melville
Born in Nelson, N.J. - 1791
Died in Pepperell, Mass. - 1869



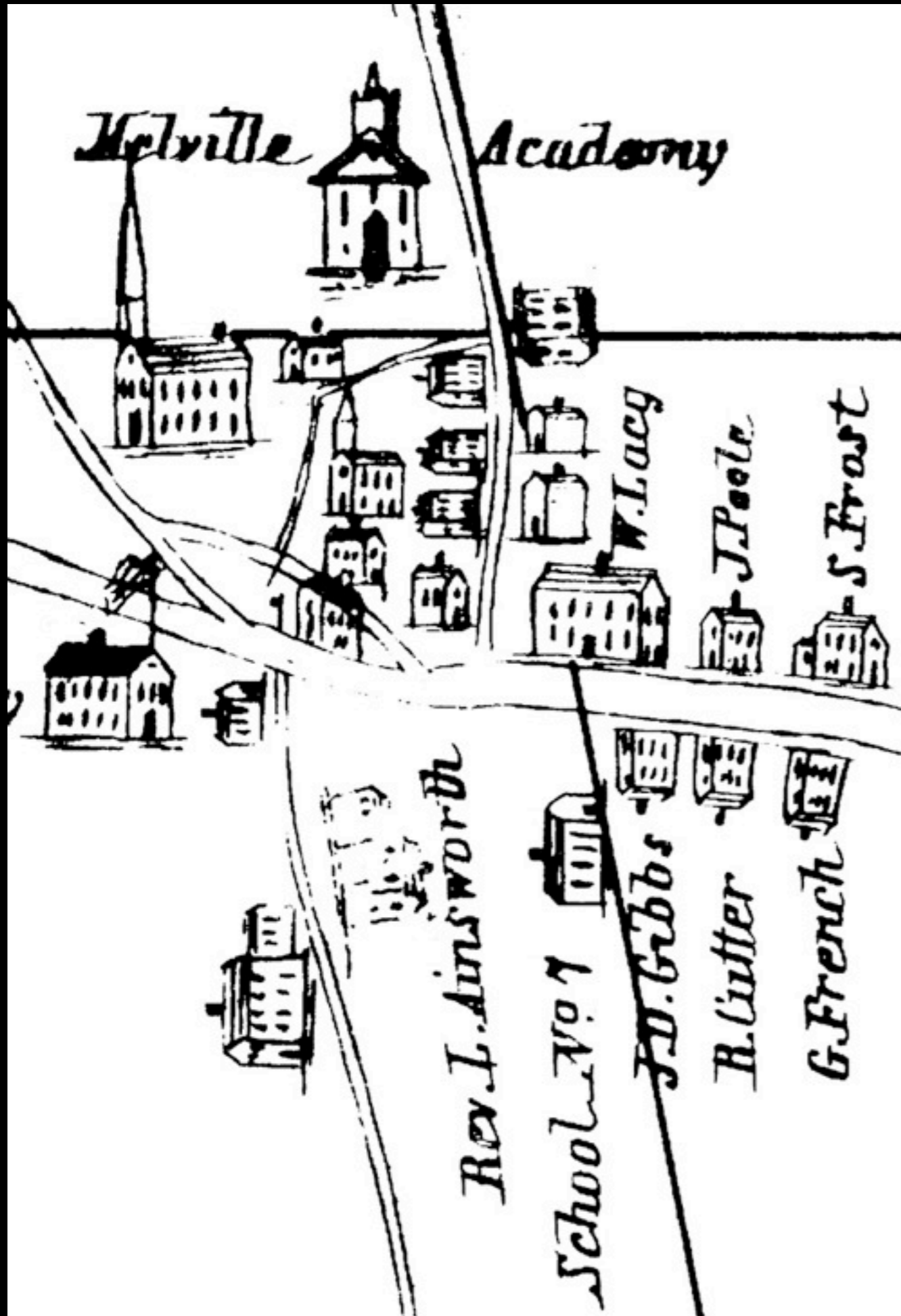
Betsy Bacy Melville
Born in Jaffrey, N.H. - 1789
Died in Pepperell, Mass. - 1863

*Built Stone House, E. Jaffrey, N.H. about 1825
occupied it as their home until 1859*





Wednesday, August 27, 14



J.D. Gibbs' 1850 map of Jaffrey. Detail.







SUMMER RESIDENCE, JAFFREY, N. H.



RESIDENCE, 1 ARLINGTON STREET.
1883—1894.



DRAWING-ROOM, 1 ARLINGTON STREET.





DEA. J.M. MELVILLE

1791—1869.

BETSEY LACY

HIS WIFE

1788—1863.

CHARLOTTE LACY

1791—1863.

DEA. J.M. MELVILLE

1791—1869.

BETSEY LACY

HIS WIFE

1788—1863.

CHARLOTTE LACY

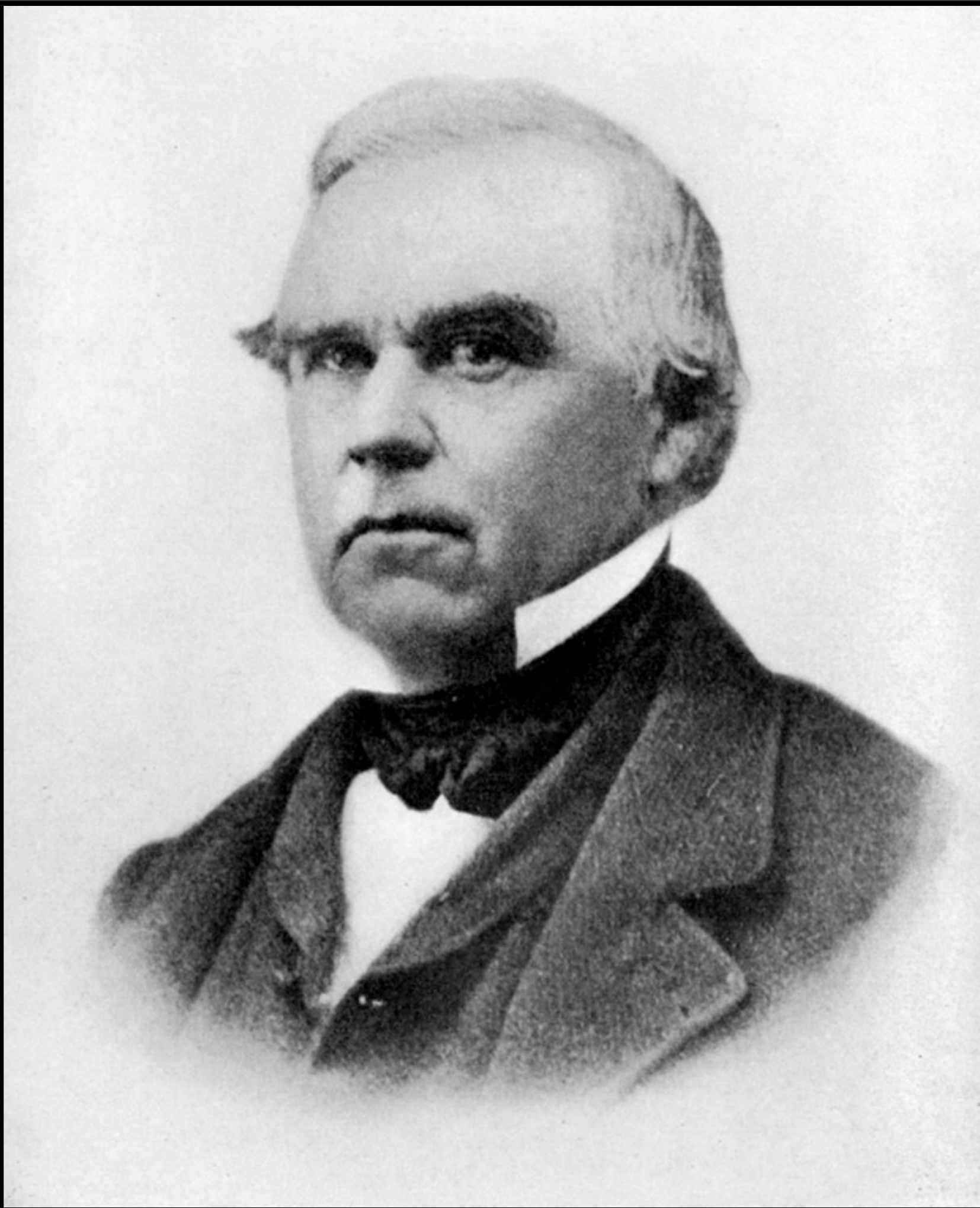
1791—1863.

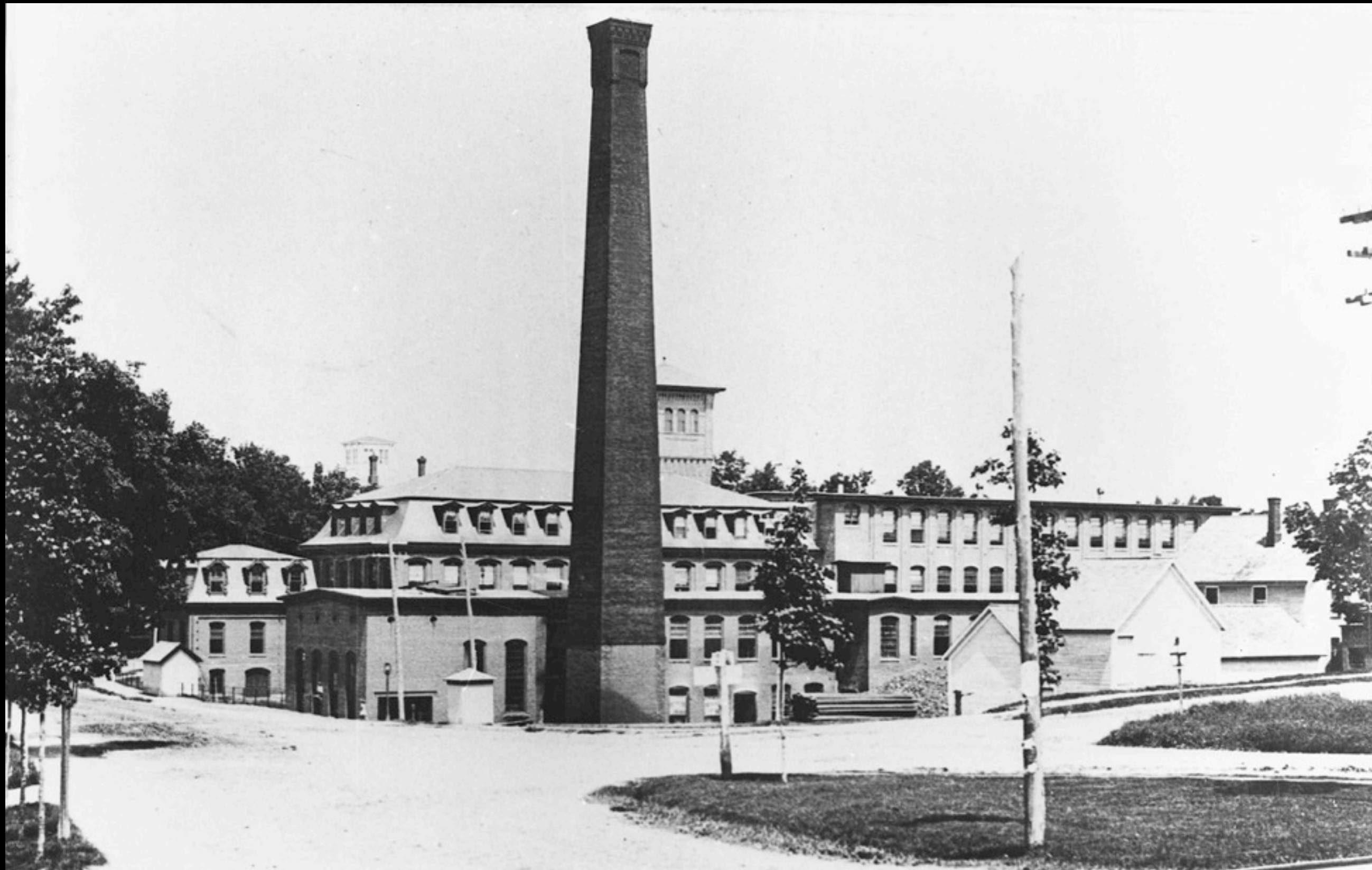
ALONZO BASCOM

1812-1872



Mr Alonzo Bascom.





White Bro's Mills, East Jaffrey,
Photo by C. T. Johnson, Jaffrey, N. H.



Wednesday, August 27, 14



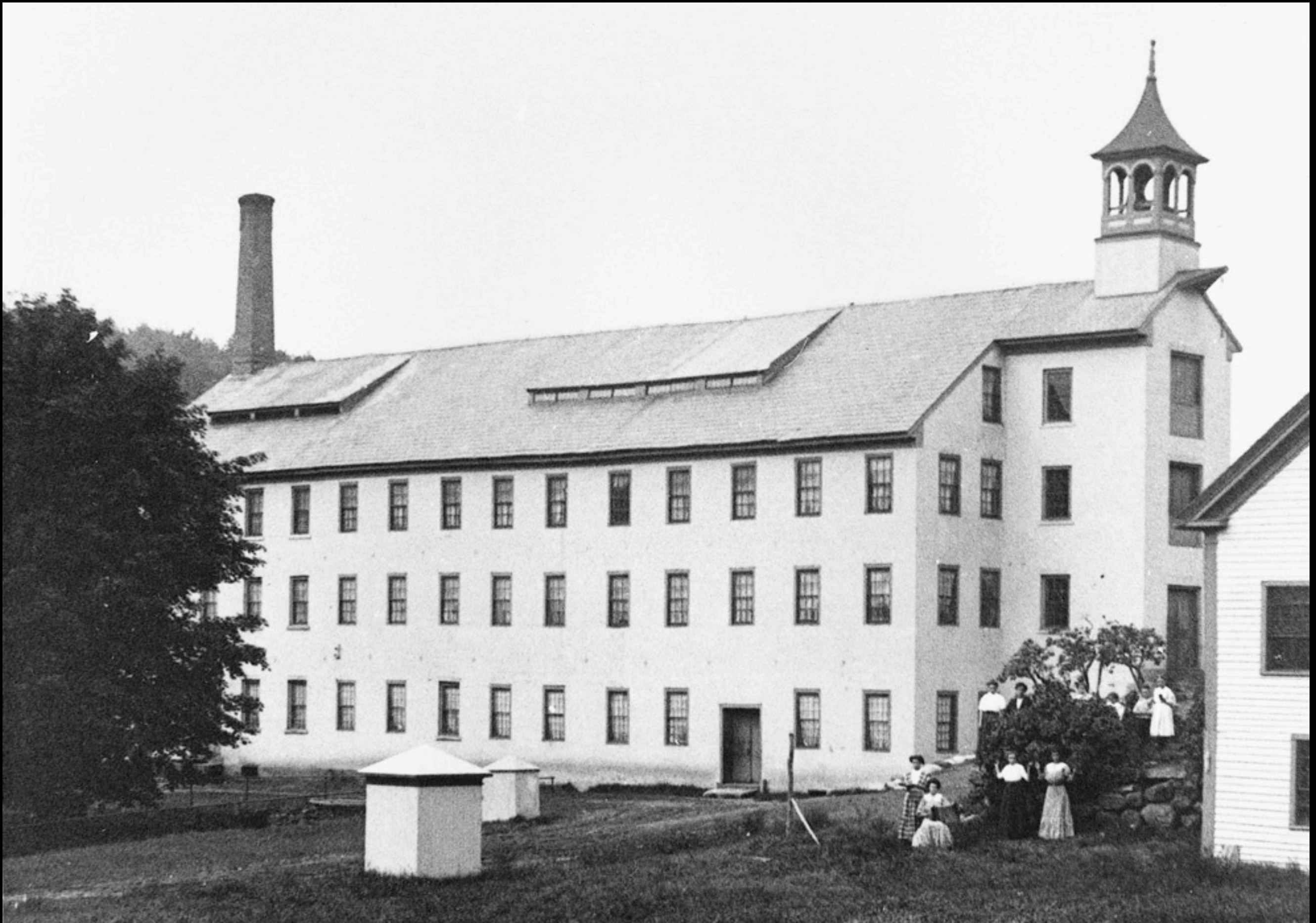
Wednesday, August 27, 14



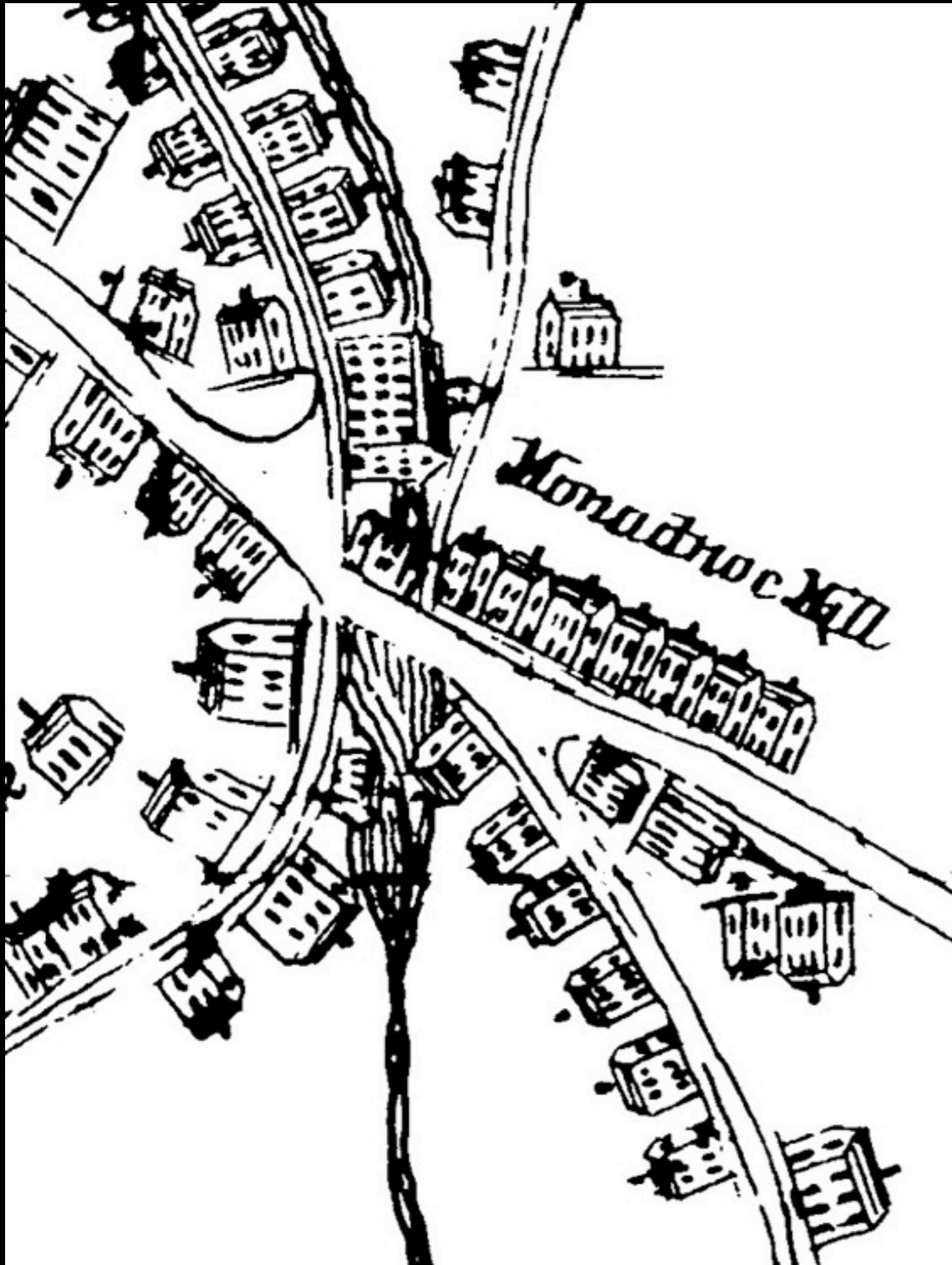
JAFFREY MILLS

EAST JAFFREY, N.H.

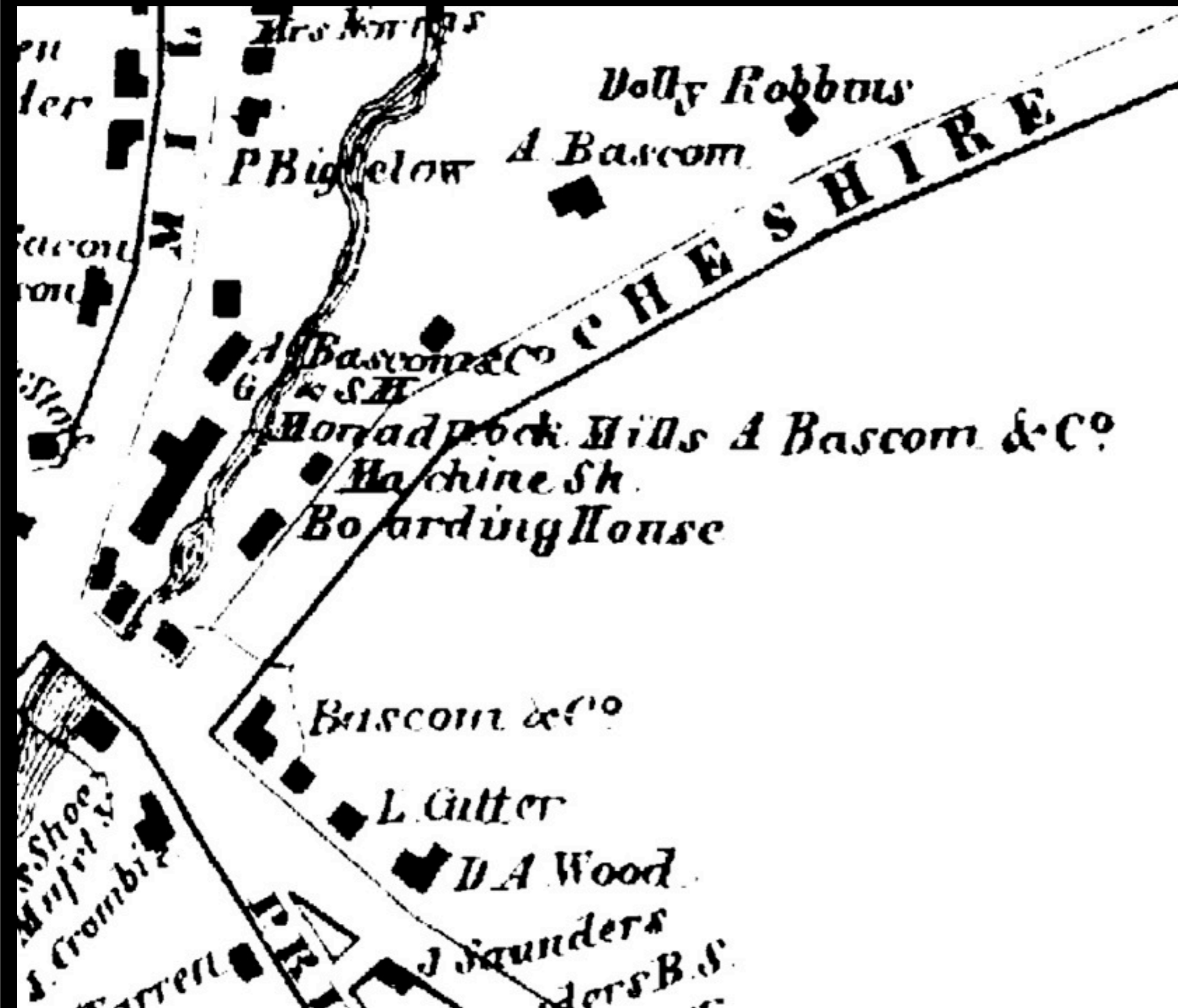
LISTED IN THE NATIONAL REGISTER
OF HISTORIC PLACES 1982
THE
JAFFREY
MILLS
1868



Wednesday, August 27, 14



J.D. Gibbs' 1850 map of Jaffrey. Detail.



L. Fagan's
1858 map of
Cheshire
County.
Detail.



Atlas of
Cheshire
County,
1877.
Detail.



D.H. Hurd's
Atlas of New
Hampshire,
1892.
Detail.







ALONZO BASCOM

DIED

Sept. 24. 1872.

Æ. 60.

CLARISSA

Wife of

ALONZO BASCOM.

Died Feb. 29. 1856.

Æ. 37.

ANN J.

Wife of

ALONZO BASCOM.

Died Jan. 1. 1861.

Æ. 31.



THE END